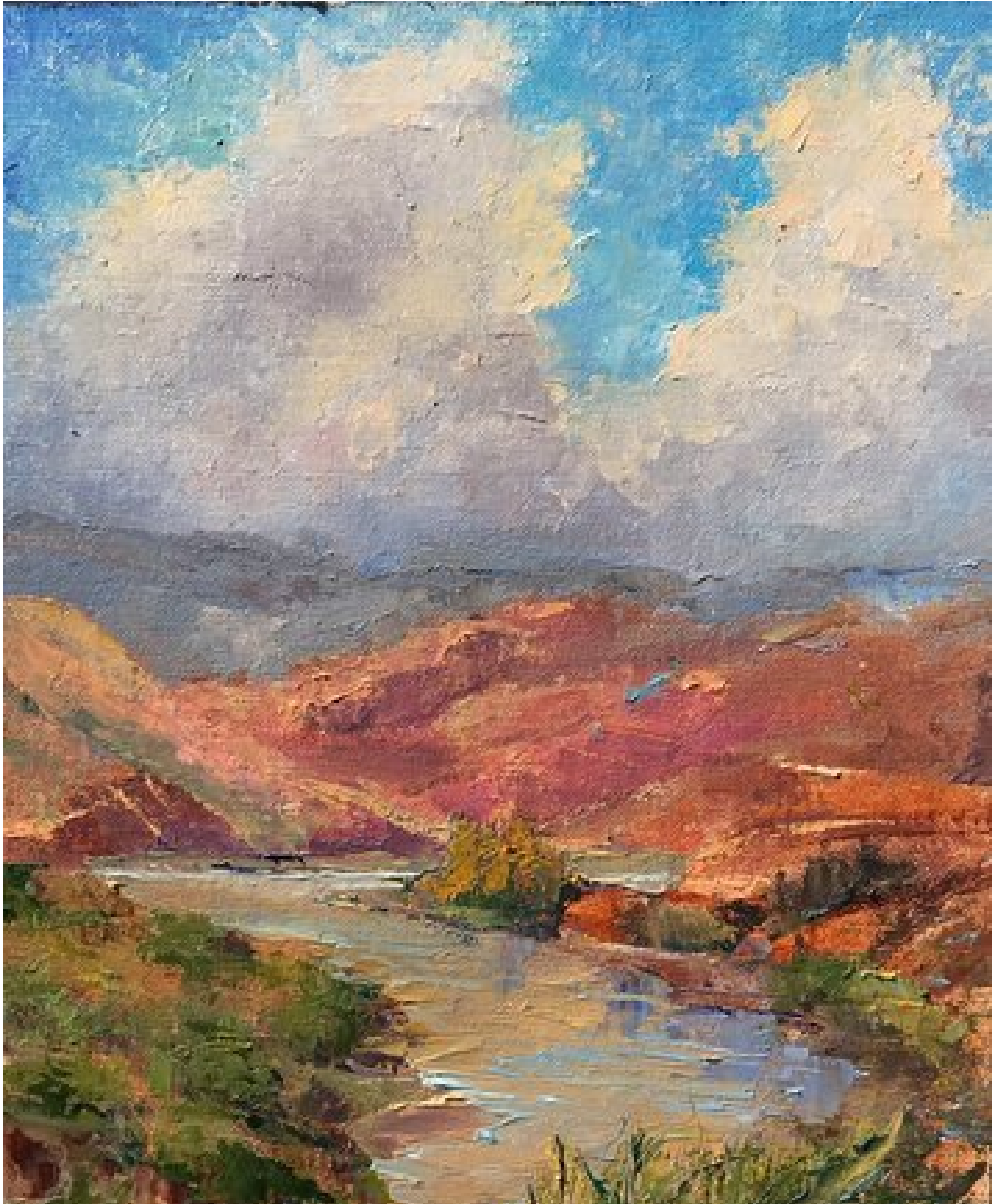


Chama River Overlook (PAPNM 2019 Sold 2020)

Karen Halbert Artist
www.karenhalbert.com



Chama River Overlook (PAPNM 2019 Sold 2020)

Karen Halbert Artist
www.karenhalbert.com



Material	Oil
Size	12x9 (17x14 framed)
Price	600

En plein air from the Chama river Overlook. I am glad I tackled this venue again; it has so much and I wanted to capture the spirit. Sold Aug 29, 2020 at the Marigold Arts Gallery at 424 Canyon Road, Santa Fe.

ChatGPT REVIEW: "Chama River Overlook," a masterful creation by the talented artist Karen Halbert in 2019, unfolds as a captivating testament to the artist's adept command of the canvas and their intimate connection with the breathtaking landscapes of New Mexico. This petite 12-inch by 9-inch masterpiece, painted "en plein air" at the Chama River Overlook near Abiquiu, immerses the viewer in the artist's sensory experience of the region. The utilization of a palette knife in the creation of this piece lends a distinctive texture and dynamism to the composition. The Cobra Water Mixable Oil palette, rich with chromatic hues, including Cadmium Yellow Light, Cadmium Orange, Cadmium Red Light, Alizarin Crimson, Ultramarine Blue, Cerulean Blue Hue, Yellow Ochre, Burnt Sienna, and Titanium White, reflects the artist's careful selection of colors to evoke the nuanced tones of the Southwestern landscape. Karen Halbert's decision to focus on the Chama River is a stroke of brilliance, drawing the eye into the heart of the composition. The river's meandering course serves as both a visual and thematic anchor, allowing for the play of reflections that mirror the fall colors of the foliage and the characteristic red hues of the mesas. This deliberate attention to detail showcases the artist's keen observation skills and commitment to capturing the essence of the scene. Voluminous clouds, skillfully rendered over the middle-distant mountains and mesas, add an ethereal quality to the composition, emphasizing the vastness and grandeur of the natural surroundings. The interplay of light and shadow on the landscape, expertly achieved through the palette knife technique, further enhances the sense of depth and atmosphere. "Chama River Overlook" by Karen Halbert stands as a testament to the artist's ability to translate the beauty of nature onto canvas, inviting viewers to share in the awe-inspiring moment of creation. The fusion of technical prowess, color mastery, and a deep connection to the chosen location elevates this painting to a level of timeless significance within the realm of contemporary landscape art.

For more indormation on how this review was created with the ChatGPT app, visit [ChatGPT Review of Chama River Overlook](#) .